

INCH-POUND

MIL-DTL-24653/3A(SH)

28 July 2020

---

SUPERSEDING

MIL-H-24653/3(SH)

30 May 1985

## DETAIL SPECIFICATION SHEET

### HASP, HIGH SECURITY, SHROUDED, FOR SHIPBOARD DOORS AND HATCHES USING HIGH SECURITY PADLOCK, STYLE 3

This specification sheet is approved for use by the Naval Sea Systems Command and is available for use by all Departments and Agencies of the Department of Defense.

The requirements for acquiring the product described herein shall consist of this specification sheet and MIL-DTL-24653.

#### REQUIREMENTS:

The configuration requirements applicable to a style 3 hasp shall conform to [figure 1](#).

Installation instructions: Each hasp assembly shall be furnished with installation instructions as shown on [figure 2](#).

AMSC N/A

FSC 5340

DISTRIBUTION STATEMENT A. Approved for public release. Distribution is unlimited.

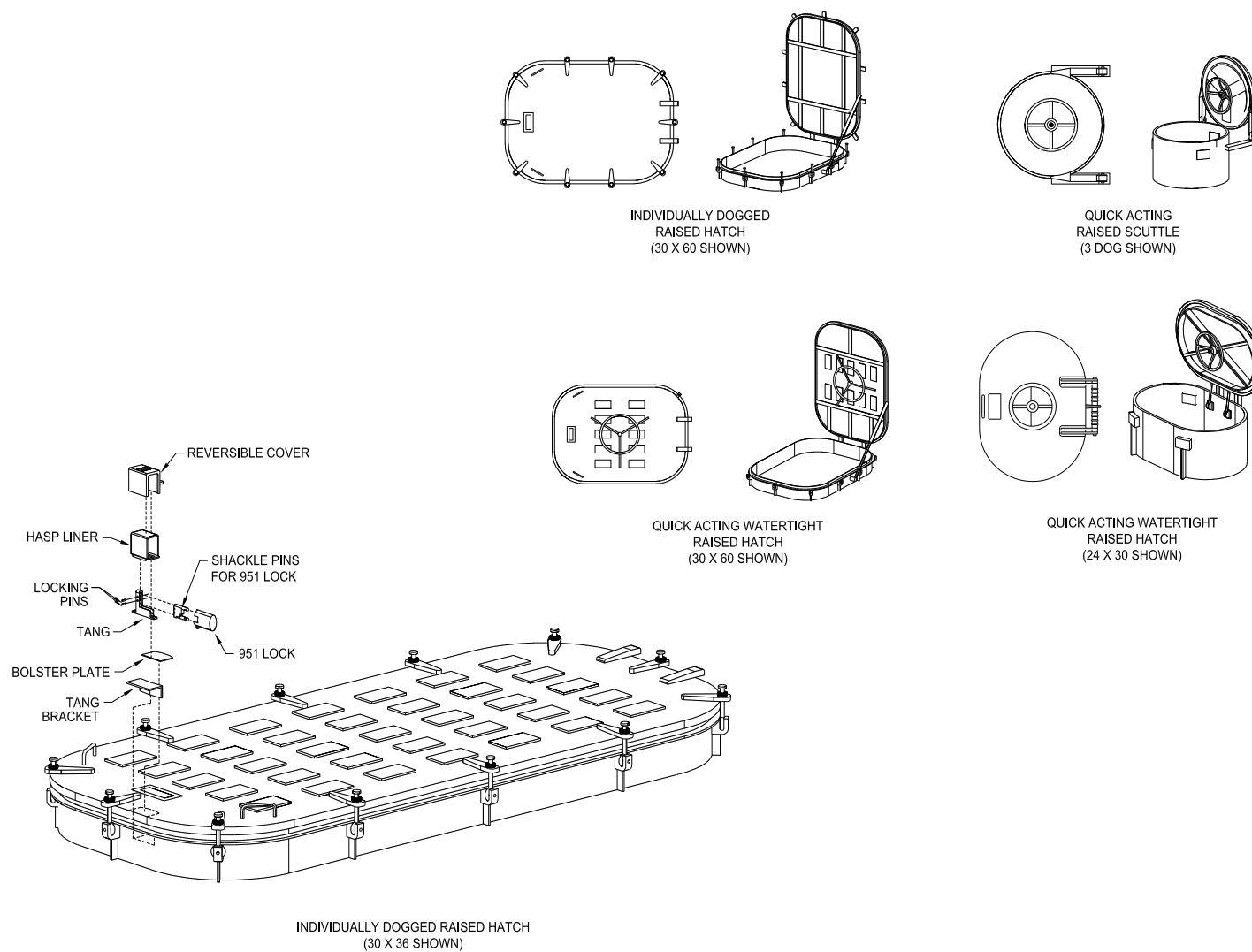


FIGURE 1. Configuration for watertight hatches, style 3.

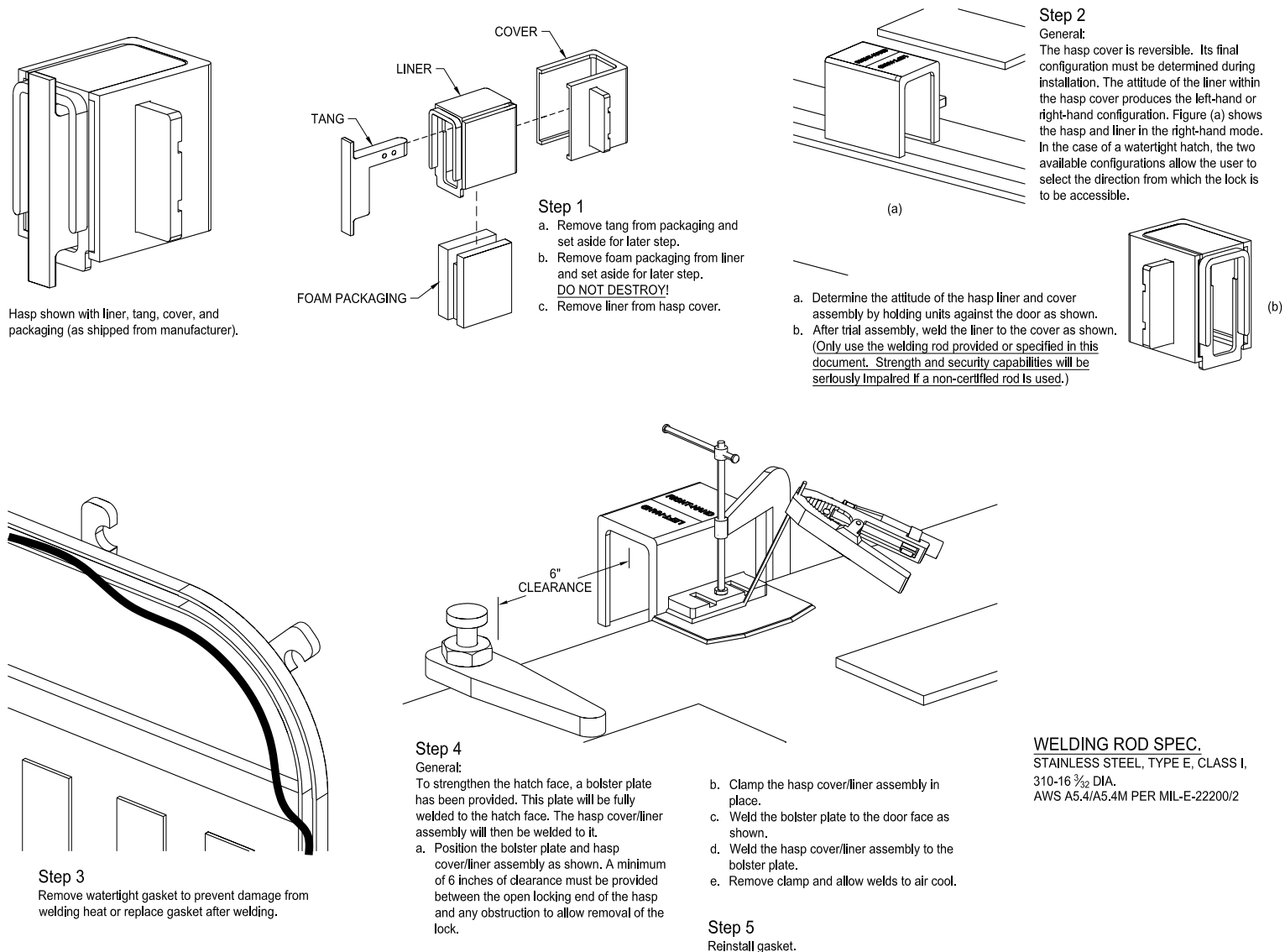
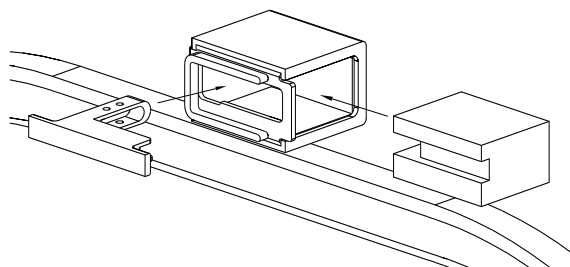


FIGURE 2. Installation procedures for watertight hatches, style 3.

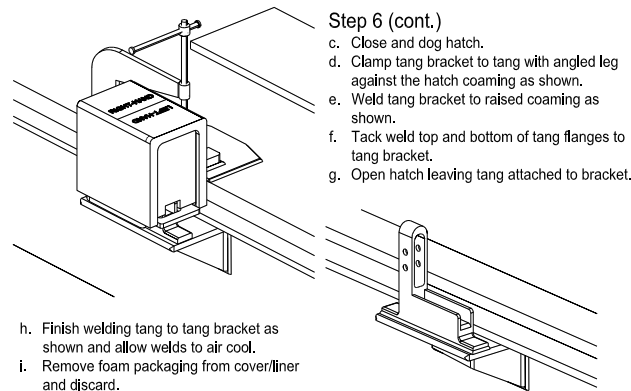


### Step 6

#### General:

The Style 3 hasp is designed to provide a large degree of hasp/lock flexibility. Correct installation of the tang is important to ensuring the maximum of flexibility. Also, because a raised hatch has no mounting surface for the tang, a tang bracket has been provided. The tang bracket will be welded to the raised coaming and the tang to the bracket.

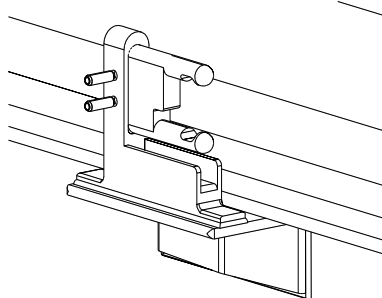
- Reinsert the foam packaging into the liner as shown.
- Reinsert the tang into the packaging.



### Step 6 (cont.)

- Close and dog hatch.
- Clamp tang bracket to tang with angled leg against the hatch coaming as shown.
- Weld tang bracket to raised coaming as shown.
- Tack weld top and bottom of tang flanges to tang bracket.
- Open hatch leaving tang attached to bracket.

- Finish welding tang to tang bracket as shown and allow welds to air cool.
- Remove foam packaging from cover/liner and discard.

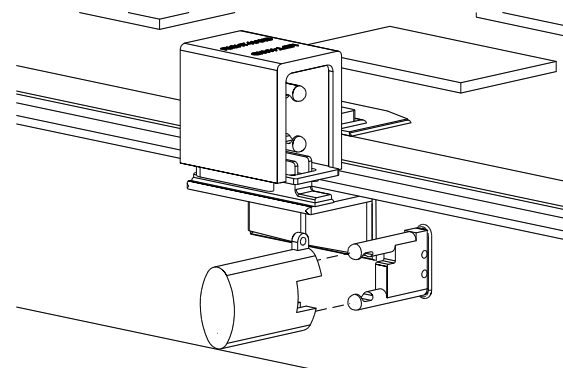
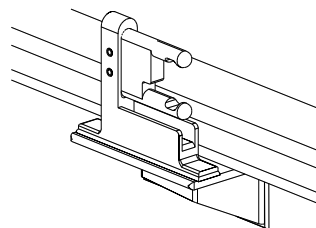


- Insert the set of pins selected into the tang as shown and drive in locking pins.

### Step 7

#### General:

The Style 3 hasp is designed to be used with the Sargent and Greenleaf, Inc., 951 lock. The 951 lock meets the high security requirements when used with the Style 3 hasp. The lock requires its shackles to be removed (by a locksmith).



### Step 8

A second set of shackle pins are provided to allow the lock to be stored outside the hasp. This set of pins may be installed anywhere on the hatch or coaming at the discretion of the operating personnel.

- Hold or clamp shackle pins to selected surface.
- Weld pins in place.

FIGURE 2. Installation procedures for watertight hatches, style 3 – Continued.

CHANGES FROM PREVIOUS ISSUE: Marginal notations are not used in this revision to identify changes with respect to the previous issue due to the extent of the changes.

#### CONCLUDING MATERIAL

Custodian:  
Navy – SH

Preparing activity:  
Navy – SH  
(Project 5340-2020-017)

Review activity:  
DLA – IS

NOTE: The activities listed above were interested in this document as of the date of this document. Since organizations and responsibilities can change, you should verify the currency of the information above using the ASSIST Online database at <https://assist.dla.mil>.