



PRODUCT BULLETIN

**PRODUCT: X-10, CDX-10, DKX-10**

**SUBJECT: Drive Cam Change**

**BULLETIN: #58**

**DATE: October 14, 2019**

Kaba Mas strives to produce best in class products and services and prides itself on listening to our customers. We have heard from technicians in the field that they encountered issues when “seating” the X-10 spindle in the drive cam and ultimately measuring / cutting the spindle too short.

The current design (figure 1) has a four-sided spindle shaft, which has perhaps aided in the improper seating of the spindle.

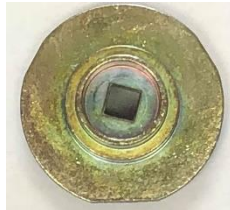


Figure 1

Kaba Mas is pleased to announce we have addressed this issue by redesigning the drive cam. It is now easier to fully insert the spindle in the drive cam in the correct position prior to measuring / cutting.

Our new design, 12 spoke hub (figure 2), was recently approved by the General Services Administration (GSA) and has been introduced into our production assembly process.



Figure 2