



DoD Lock Program

NAVFAC Engineering and Expeditionary Warfare Center

1100 23rd Avenue, Port Hueneme, CA 93043

(800) 290-7607 or (805) 982-1212

<https://www.navfac.navy.mil/go/locks>

Technical Bulletin 19-002

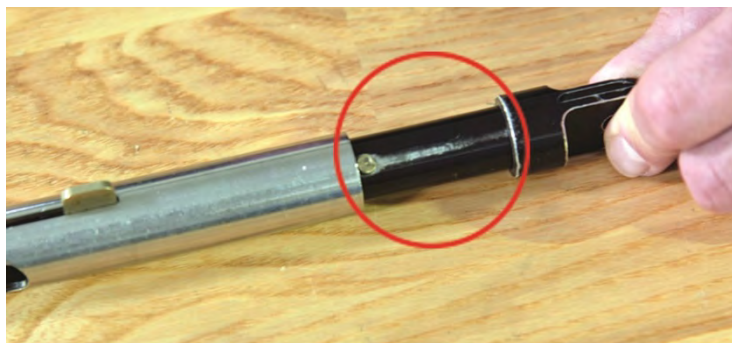
Internal Locking Device (ILD) Key Guide Assembly (KGA) Detent Issue

It has been brought to the attention of the DoD Lock Program that ILD key guide shrouds can become difficult to open and close over time. In this technical bulletin, the symptom, problem, and solution are described for the end user's awareness.

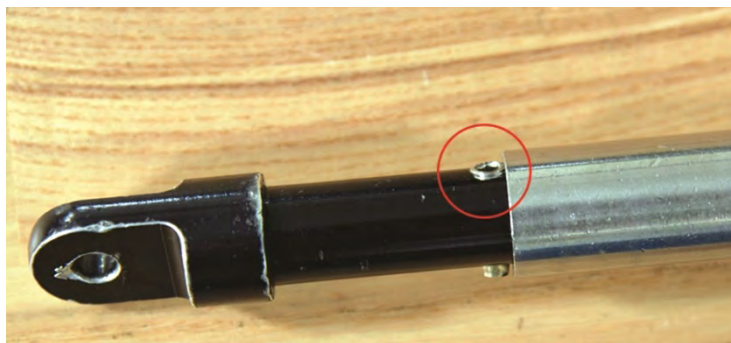
Symptom: The key guide shroud (silver tube in photos below) does not move smoothly, or the key guide shroud is stuck closed (covering the key).

Problem: The cause is a loose detent set screw binding against the key guide shroud.

Solution: Contact the DoD Lock Program Technical Support Hotline at (805) 982-1212, toll-free (800) 290-7607, or DSN 551-1212; or by email ILD_Field_Support@navy.mil for a replacement key guide assembly.



Damage to key guide core.



Cause is a loose detent set screw.